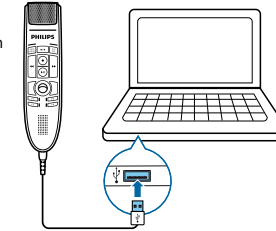


Customize your modes

- Modi anpassen
- Personalice sus modos
- Personalizzare le modalità
- Anpassa lägen
- Personnalisez vos modes
- Pas uw modi aan

1 Connect

- Anschließen
- Connecter
- Conectar
- Collegare
- Aansluiten
- Anslut



2 Software

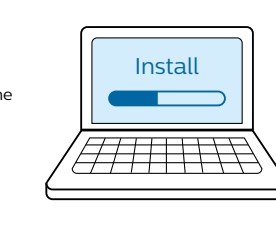
- Software
- Logiciel
- Software
- Software
- Software
- Software
- Programvara

Philips SpeechControl software
www.dictation.philips.com/speechcontrol



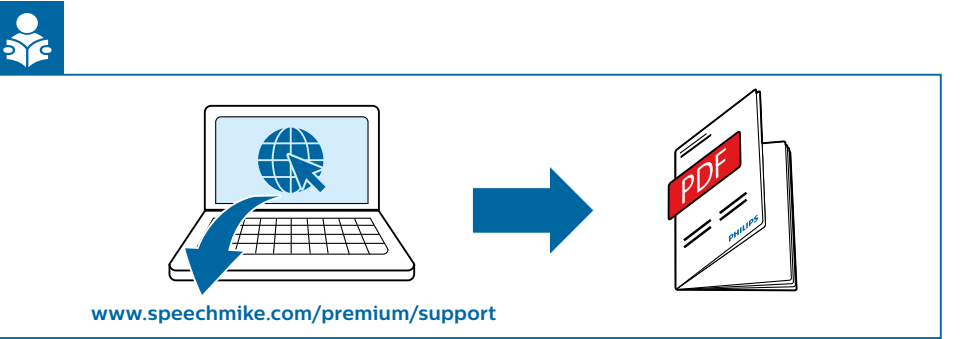
3 Install

- Installation
- Installation
- Instalación
- Installazione
- Installatie
- Installation



4 Configure

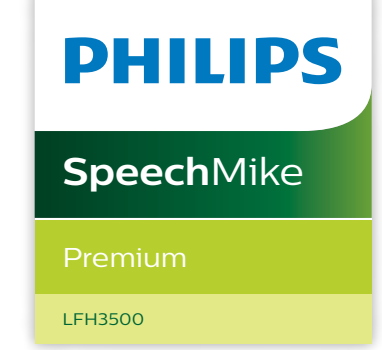
- Konfiguration
- Configuration
- Configuración
- Configurazione
- Configuratie
- Konfiguration

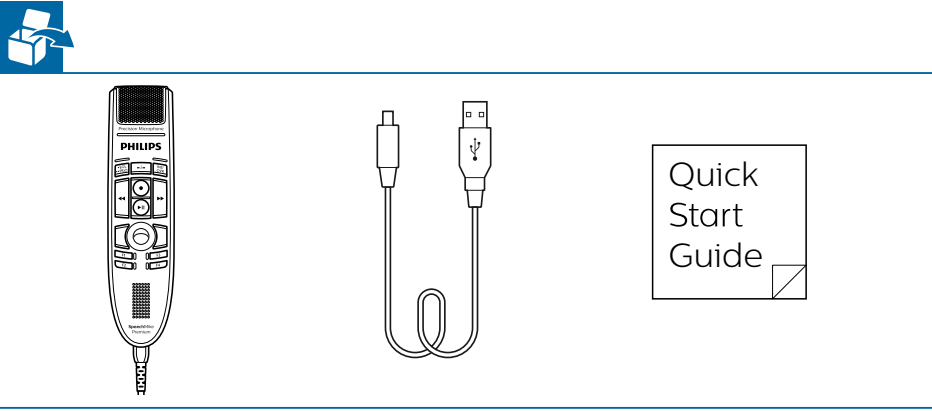
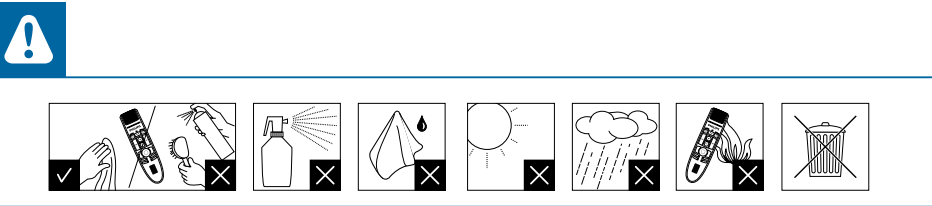
www.speechmike.com/premium/support



© 2020 Speech Processing Solutions GmbH. All rights reserved.
 Specifications are subject to change without notice. Philips and the Philips shield emblem are registered trademarks of Koninklijke Philips N.V. and are used under license.
 Document version 7.0, 29/05/2020, 5103 109 9755.7



- EN** Quick start guide
- DE** Kurzanleitung
- FR** Guide de démarrage rapide
- ES** Guía de inicio rápido
- IT** Guida rapida di introduzione
- NL** Snelle startgids
- SV** Snabbstartsguide

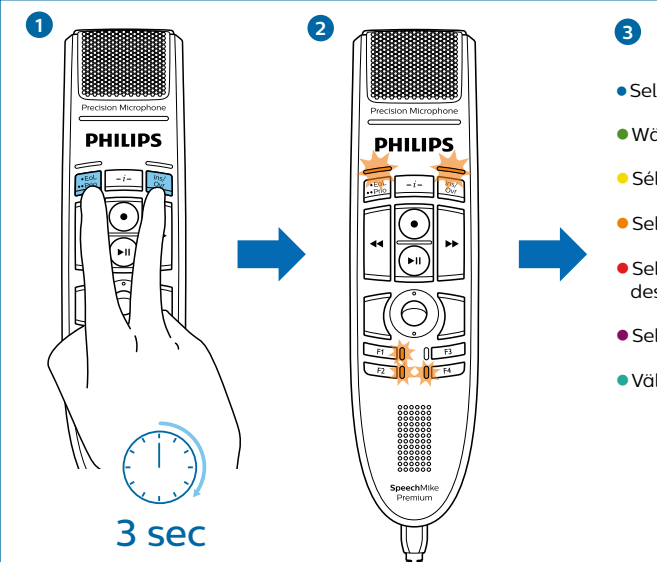




For product information and support, visit
www.speechmike.com/premium/support

Select your button mode

- Tastenmodus auswählen
- Selecciona su modo de botones
- Selecteer uw toetsenmodus

- Sélectionnez votre mode des boutons
- Selezionare una modalità pulsante
- Välj ett knappläge



- Select your mode
- Wählen Sie Ihren Modus
- Sélectionnez votre mode
- Selecciona su modo
- Selezionare la modalità desiderata
- Selecteer uw modus
- Välj ett läge

F1	<ul style="list-style-type: none"> ● Event mode (default) ● Befehlsmodus (Standardeinstellung) ● Mode de commande (par défaut) ● Modo comando (predeterminado) ● Modalità comando (predefinita) ● Opdrachtmodus (standaard) ● Åtgärdsläge (standard)
F2	<ul style="list-style-type: none"> ● Keyboard mode ● Mode clavier ● Modalità tastiera ● Tangentbordsläge ● Tastaturmodus ● Modo teclado ● Toetsenbordmodus
F4	<ul style="list-style-type: none"> ● Windows speech recognition mode ● Windows Spracherkennungsmodus ● Mode de reconnaissance vocale Windows ● Modo reconocimiento de voz Windows ● Modalità riconoscimento vocale Windows ● Windows-spraakherkenningsmodus ● Läget Windows taligenkänning
•EoL	<ul style="list-style-type: none"> ● Dragon for Mac mode ● Dragon-Modus für Mac ● Mode Dragon pour Mac ● Modo Dragon para Mac ● Modalità Dragon per Mac ● Dragon-modus voor Mac ● Läget Dragon för Mac
••Prio	
Ins/Ovr	<ul style="list-style-type: none"> ● Dragon for Windows mode ● Dragon-Modus für Windows ● Mode Dragon pour Windows ● Modo Dragon para Windows ● Modalità Dragon per Windows ● Dragon-modus voor Windows ● Läget Dragon för Windows

i

● Find more information on all button modes here: www.speechmike.com/premium/support

● Weitere Informationen zu allen Tastenmodi finden Sie hier: www.speechmike.com/premium/support

● De plus amples informations sur les modes des boutons sont disponibles ici : www.speechmike.com/premium/support

● Encuentre más información acerca de todos los modos de botones aquí: www.speechmike.com/premium/support

● Ulteriori informazioni su tutte le modalità pulsante sono disponibili qui: www.speechmike.com/premium/support

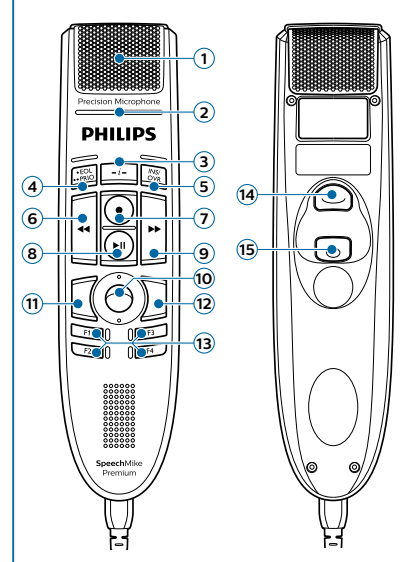
● Hier vindt u meer informatie over alle toetsenmodi: www.speechmike.com/premium/support

● För mer information om alla knapplägen: www.speechmike.com/premium/support

Overview (Event mode)

- Übersicht (Befehlsmodus)
- Descripción general (Modo comando)
- Overzicht (Opdrachtmodus)

- Présentation (Mode de commande)
- Panoramica (Modalità comando)
- Översikt (Åtgärdsläge)



- Microphone (Mikrofon)
- Record indicator light (Luz indicadora de grabación)
- Instruction (Anweisung)
- End-of-letter (EOL), priority (Briefende (EOL), Priorität)
- Insert/overwrite (Einfügen/Überschreiben)
- Rewind (Rücklauf)
- Record (Aufnahme)
- Play/pause (Wiedergabe/Pause)
- Fast-forward (Schneller Vorlauf)
- Trackball/left mouse button (Trackball/linke Maustaste)
- Left mouse button (Linke Maustaste)
- Right mouse button (Rechte Maustaste)
- Programmable function keys (Programmierbare Funktionstasten)
- Command (speech recognition) (Befehl (Spracherkennung))
- Left mouse button (Linke Maustaste)